



GEDIA AUTOMOTIVE GROUP, CARBONDALE BUSINESS PARK

### *taxes:*

#### GEORGIA INCOME TAX:

PERSONAL: 1% – 6% BASED ON INCOME  
FRANCHISE: STATE DOES NOT COLLECT

#### EFFECTIVE TAX RATES 2021:

WHITFIELD COUNTY 29.506 MILLS  
CITY OF DALTON 34.942 MILLS

#### FREEPORT EXEMPTION:

WHITFIELD COUNTY 100%  
CITY OF DALTON 20%

DALTON–WHITFIELD  
JOINT DEVELOPMENT AUTHORITY

### *utilities:*

#### ELECTRICITY:

DALTON UTILITIES, GEORGIA POWER,  
NORTH GEORGIA EMC

#### WATER:

DALTON UTILITIES	65 MGD*
PERMITTED CAPACITY	25 MGD*
AVERAGE DAILY DEMAND	30 MGD*
PEAK DEMAND	

\*MILLIONS OF GALLONS PER DAY

#### SEWER/WASTE MANAGEMENT:

DALTON UTILITIES: WASTEWATER TREATMENT

#### NATURAL GAS DISTRIBUTOR:

DALTON UTILITIES

#### TELECOMMUNICATIONS:

DALTON UTILITIES/OPTILINK, WINDSTREAM,  
CHARTER COMMUNICATIONS  
SPEEDS UP TO ONE GIGABIT  
ADJACENT TO NATIONAL FIBER NETWORKS



# DALTON–WHITFIELD

## 2022 community profile



GEORGIA NORTHWESTERN TECHNICAL COLLEGE





## workforce

**WORKFORCE DRAW AREA\*:50 MIN DRIVE**

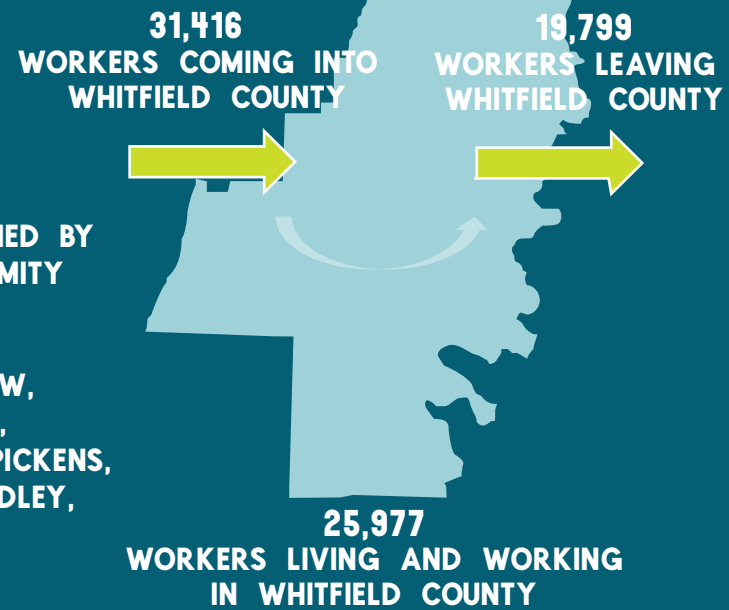
**WORKFORCE: 1,189,613**

**POPULATION: 2,355,870**

**WORKFORCE, WHITFIELD: 24,337**

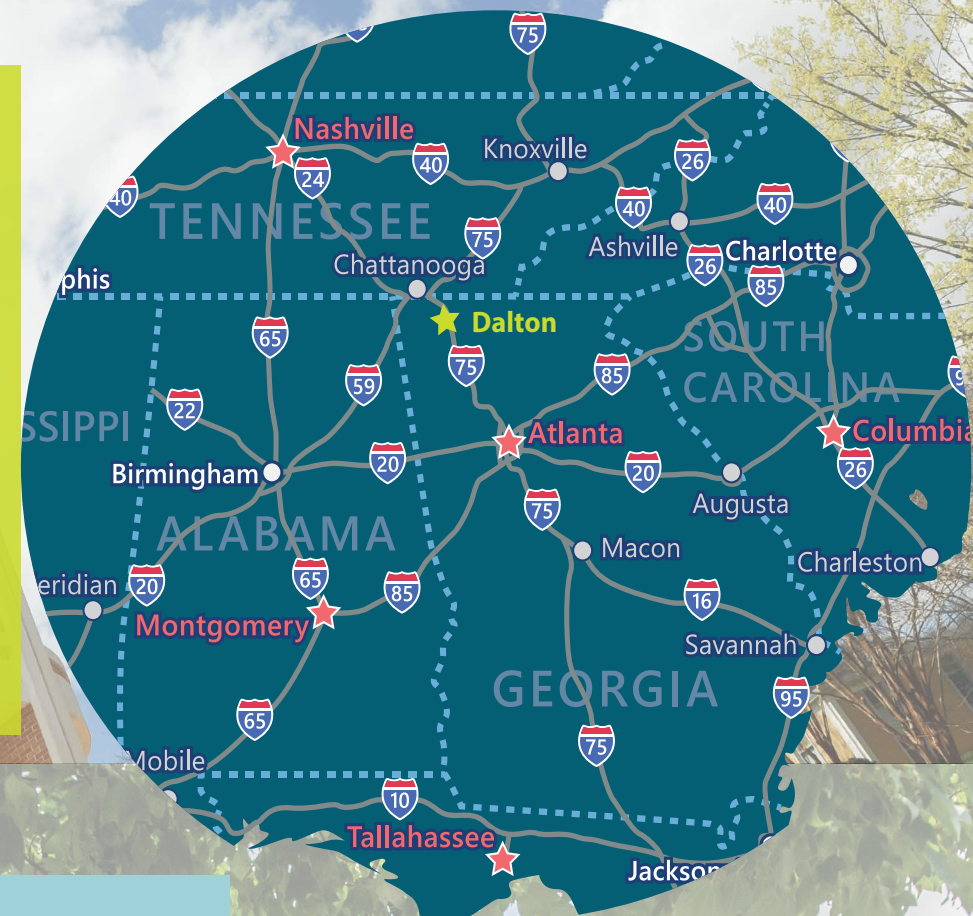
\*NOTE: THE LABOR FORCE DRAW AREA IS DEFINED BY COMMUTING PATTERNS AND GEOGRAPHIC PROXIMITY TO WHITFIELD COUNTY

\*17-COUNTY LABOR FORCE DRAW AREA: BARTOW, CATOOSA, CHATTOOGA, CHEROKEE, COBB, DADE, FLOYD, GILMER, GORDON, MURRAY, PAULDING, PICKENS, WALKER, AND WHITFIELD COUNTIES IN GA. BRADLEY, HAMILTON, AND MARION COUNTIES IN TN.



## distance from dalton

CITY	MILES
ATHENS, GA	154
ATLANTA, GA	75
BIRMINGHAM, AL	178
CHARLESTON, SC	407
CHATTANOOGA, TN	25
HUNTSVILLE, AL	130
NASHVILLE, TN	165
SPARTANBURG, SC	248
TUSCALOOSA, AL	236



## economics

**AVERAGE HOUSEHOLD INCOME:**

**\$63,780**

**GEORGIA**

**\$81,206**

**MEDIAN HOME VALUE**

**\$144,281**

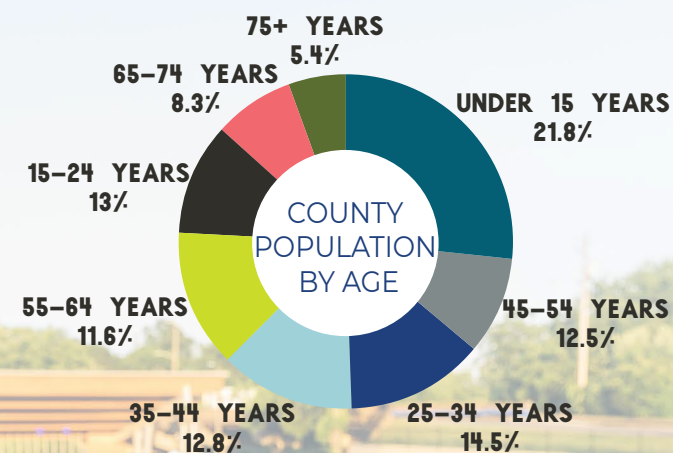
**POPULATION:**

**WHITFIELD COUNTY 104,172**

**CITY OF DALTON 34,417**

**DALTON MSA\* 145,184**

\*DALTON MSA INCLUDES WHITFIELD & MURRAY COUNTIES  
SOURCE: U.S. CENSUS BUREAU, AMERICAN COMMUNITY SURVEY



SOURCES: ESRI COMMUNITY ANALYST, U.S. CENSUS BUREAU, U.S. BUREAU OF LABOR STATISTICS

## top industry employers

**SHAW INDUSTRIES**  
**MOHAWK INDUSTRIES**  
**ENGINEERED FLOORS/J+J FLOORING**  
**TARKETT**  
**Q CELLS**

COVER PHOTO IMAGES:  
ORCHARD PLACE TOWNHOMES,  
HAIG MILL LAKE PARK, AND  
ANNA SHAW CHILDREN'S INSTITUTE

INSIDE LEFT: BURR PERFORMING ARTS PARK  
INSIDE RIGHT: DOWNTOWN DALTON

## transportation

**MAJOR LOCAL/REGIONAL HIGHWAYS:**

**I-75, US 41, US 76, I-24, I-40**

**RAILROAD: NORFOLK SOUTHERN, CSX**

**MOTOR FREIGHT CARRIERS:**

**BRAUNS, SOUTHEASTERN FREIGHT LINES, TCW, AND US XPRESS. US XPRESS AND SEVERAL OTHER CARRIERS HAVE SHOPS IN THE DALTON AREA. CONVENIENT TO MANY MAJOR CARRIERS IN CHATTANOOGA, TN.**

**AIR:**

**HARTSFIELD-JACKSON INTERNATIONAL - 95 MI**  
**CHATTANOOGA METROPOLITAN - 33 MI**  
**DALTON MUNICIPAL AIRPORT -**  
**LOCAL 5,500 FT. LIGHTED RUNWAY**

PORTS:	MILES	KM
ARP INLAND PORT	20	32
PORT OF CHATTANOOGA	56	90
PORT OF SAVANNAH	337	542

## public k-12 education

**WHITFIELD COUNTY SCHOOLS**  
**WWW.WCSGA.NET**

**DALTON PUBLIC SCHOOLS**  
**WWW.DALTONPUBLICSCHOOLS.COM**

**PRIVATE K-12 EDUCATION**  
**CHRISTIAN HERITAGE SCHOOLS**  
**WWW.CHSLIONS.COM**

**COLLEGES & UNIVERSITIES**

**DALTON STATE COLLEGE**  
**WWW.DALTONSTATE.EDU**

**GEORGIA NORTHWESTERN**  
**TECHNICAL COLLEGE**  
**WWW.GNTC.EDU**

## recreation & culture

**12 PARKS WITH OVER 500 ACRES**  
**9 GOLF COURSES IN AREA**  
**OVER 70 MILES OF BIKING TRAILS**  
**HAIG MILL LAKE PARK**  
**BURR PERFORMING ARTS PARK**  
**CREATIVE ARTS GUILD OFFERINGS**  
**MULTICULTURAL FESTIVALS + FOODS**  
**OCOEE WHITE WATER RAFTING 40 MI**  
**LOOKOUT MOUNTAIN CLIMBING 40 MI**